

Nuts for cylinder mounting



AVENTICS™ Nuts for cylinder mounting



Nut MR3, series CM1

- for cylinder mounting

- Suitable piston Ø 8, 10 12, 16 16 20, 25 32 80 60, 85 113, 160 250 mm

- for series MNI ICM CSL-RD CSL-RD, MNI 102



Weight

See table below

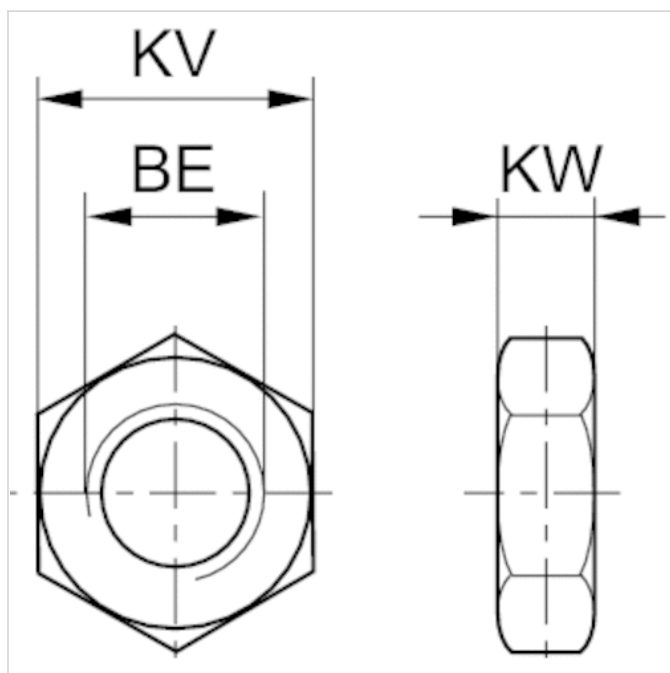
Technical data

Part No.	Piston Ø	Thread size	Housing material	Surface	Weight
1823300024	8, 10 mm	M12x1,25	Steel	galvanized	0.008 kg
0413215803	8, 10 mm	M12x1,25	Polyamide fiber-glass reinforced	-	0.05 kg
2915A51204	12, 16 mm	M16x1,5	Steel	galvanized	0.01 kg
0413214505	16 mm	M16x1,5	Polyamide fiber-glass reinforced	-	0.004 kg
2918540030	16 mm	M16x1,5	Stainless steel	-	0.02 kg
2915051207	20, 25 mm	M22x1,5	Steel	galvanized	0.02 kg
0413214602	20, 25 mm	M22x1,5	Polyamide fiber-glass reinforced	-	0.004 kg
R913030290	20, 25 mm	M22x1,5	Stainless steel	-	0.05 kg
0413214718	32 mm	M30x1,5	Polyamide fiber-glass reinforced	-	0.01 kg
3008010180	80 mm	M24x2	Steel	galvanized	0.04 kg
3056010180	60, 85 mm	M24	Steel	galvanized	0.04 kg
3012010180	113, 160 mm	M36x3	Steel	galvanized	0.13 kg
3075010180	250 mm	M48x3	Steel	galvanized	0.18 kg

Technical information

Material	
Material	Steel Polyamide fiber-glass reinforced Stainless steel
	galvanized

Dimensions



Dimensions

Part No.	Piston Ø	For series	BE	KV	KW
1823300024	8, 10 mm	MNI	M12x1,25	17	5.5
0413215803	8, 10 mm	ICM	M12x1,25	17	6.75
2915A51204	12, 16 mm	MNI	M16x1,5	22	6
0413214505	16 mm	ICM	M16x1,5	24	7
2918540030	16 mm	CSL-RD	M16 x1,5	27	8
2915051207	20, 25 mm	CSL-RD, MNI	M22x1,5	30	7
0413214602	20, 25 mm	ICM	M22 x1,5	30	8
R913030290	20, 25 mm	CSL-RD	M22 x1,5	32	11
0413214718	32 mm	ICM	M30x1,5	41	11
3008010180	80 mm	102	M24x2	36	8
3056010180	60, 85 mm	102	M24	36	8
3012010180	113, 160 mm	102	M36x3	52	10
3075010180	250 mm	102	M48x3	65	12

Round nut with set pin hole inside MR3, series CM1

- for cylinder mounting
- Suitable piston Ø 32 40 50, 63 mm
- for series RPC



Weight

See table below

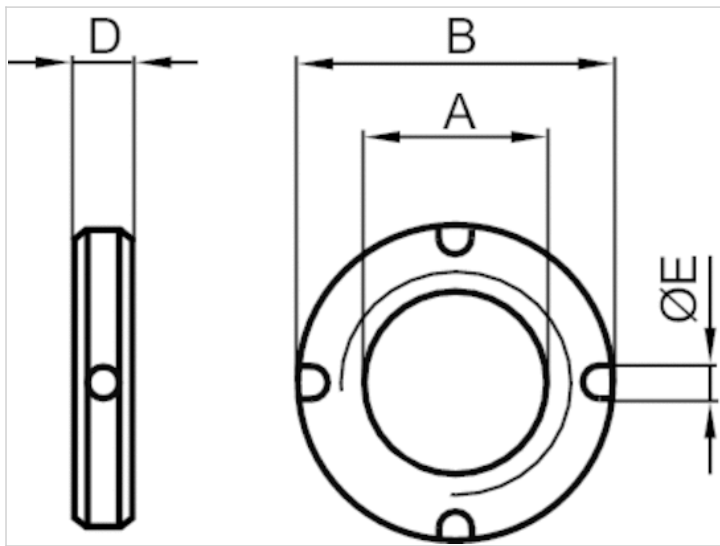
Technical data

Part No.	Piston Ø	Thread size	Weight
8915308704	32 mm	M30x1,5	0.03 kg
8915307604	40 mm	M38x1,5	0.06 kg
8915309004	50, 63 mm	M45x1,5	0.06 kg

Technical information

Material	
Material	Steel
	galvanized

Dimensions



Dimensions

Part No.	A	Ø B	D	E
8915308704	M30x1,5	38	8	4
8915307604	M38x1,5	50	10	5
8915309004	M45x1,5	55	10	5

Efficient pneumatic solutions, our program: cylinders and drives, valves and valve systems, air supply management



Visit us: [Emerson.com/Aventics](https://www.emerson.com/Aventics)

Your local contact: [Emerson.com/contactus](https://www.emerson.com/contactus)



Emerson.com



[Facebook.com/EmersonAutomationSolutions](https://www.facebook.com/EmersonAutomationSolutions)



[LinkedIn.com/company/Emerson-Automation-Solutions](https://www.linkedin.com/company/Emerson-Automation-Solutions)



[Twitter.com/EMR_Automation](https://twitter.com/EMR_Automation)

An example configuration is depicted on the title page. The delivered product may thus vary from that in the illustration. Subject to change. This Document, as well as the data, specifications and other information set forth in it, are the exclusive property of AVENTICS GmbH. It may not be reproduced or given to third parties without its consent. Only use the AVENTICS products shown in industrial applications. Read the product documentation completely and carefully before using the product. Observe the applicable regulations and laws of the respective country. When integrating the product into applications, note the system manufacturer's specifications for safe use of the product. The data specified only serve to describe the product. No statements concerning a certain condition or suitability for a certain application can be derived from our information. The information given does not release the user from the obligation of own judgment and verification. It must be remembered that the products are subject to a natural process of wear and aging.

The Emerson logo is a trademark and service mark of Emerson Electric Co. Brand logotype are registered trademarks of one of the Emerson family of companies. All other marks are the property of their respective owners. © 2017 Emerson Electric Co. All rights reserved.
2019-03



CONSIDER IT SOLVED™